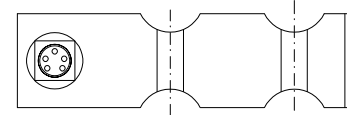
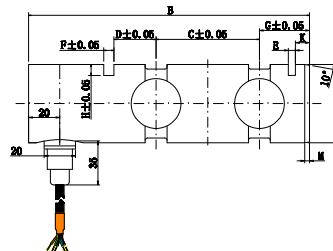
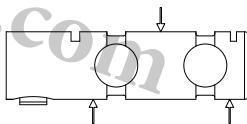


轴销传感器 / Load Pin

LF-39



量程Capacity	A	B	C	D	E	F	G	H	K	M
2, 3, 5t	50	180	66	27	4.5	6.5	32	7	9	3
7, 10t	60	190	96	14	10	9	33	9	9	5
10, 15t	65	210	116	14	10	9	32	9	8	5
20, 30t	80	225	109	20	12	11	40	10	8	6
40, 50, 100t	120	275	153	25	14	13	51	15	12	6

TECHNICAL SPECIFICATION | Built-in transmitter available 可内置放大器

量程 Capacity	0~2,3,5,7,10,20,30,40,50,100t	材质 Material	不锈钢 Stainless Steel
输出灵敏度 Rated Output	1.0 ± 10 % mV/V	输出阻抗 Output Impedance	700(350) ± 3 Ω
零点输出 Zero Balance	± 2 % F.S.	绝缘电阻 Insulation	≥ 5000MΩ/100VDC
非线性 Non-linearity	0.5 % F.S.	使用电压 Recommended Excitation	5-10V
滞后 Hysteresis	0.5 % F.S.	最大使用电压 Maximum Excitation	15V
重复性 Repeatability	0.5 % F.S.	温度补偿范围 Compensated Temp Range	- 10 ~ 60 °C
蠕变 (30分钟) Creep (30min)	0.5 % F.S.	工作温度范围 Operating Temp Range	- 20 ~ 80 °C
温度灵敏度漂移 Temp Effect on Output	0.05 % F.S. / 10°C	安全超载 Safe Load Limit	150%
零点温度漂移 Temp Effect on Zero	0.05 % F.S. / 10°C	极限超载 Ultimate Load Limit	300%
输入阻抗 Input Impedance	750(385) ± 5 Ω	电缆线尺寸 Cable Size	∅ 5x3m
出线方向 Cable Direction	水平或垂直	horizontal or vertical	
电缆线连接方式 Wire Connection	Ex + : Pin1红 Red; Ex - : Pin2黑 Black; Sig + : Pin3绿 Green; Sig - : Pin4白 White		
主要应用 Applications	塔机、吊车装载销轴部分，替代销轴作用，防止超载，机器在使用过程中的安全检测 Mainly used in loading pin part of tower cranes and hoisting cranes for pin function to prevent overload, and ensure safety in application		

*外形尺寸根据量程要求而不同 The dimension may be different based on the different capacity requirement.